

# PTC Windchill® PDM Essentials

Simplified product data management (PDM)

PTC Windchill PDM Essentials helps you securely manage, search and collaborate on MCAD designs and related content.

Easy-to-deploy, easy-to-configure, and easy-to-use, PTC Windchill PDM Essentials seamlessly manages data from PTC Creo®, and other popular CAD systems.

PTC Windchill PDM Essentials simplifies data management activities by transparently incorporating them into the design process. Designers can now be confident that their work will not be overwritten by others and that everyone is using the latest released versions of product designs. PTC Windchill PDM Essentials alleviates the daily challenge that design teams face in keeping track of their data. And it accelerates the work of non-CAD users by providing easy access to just the information they need.

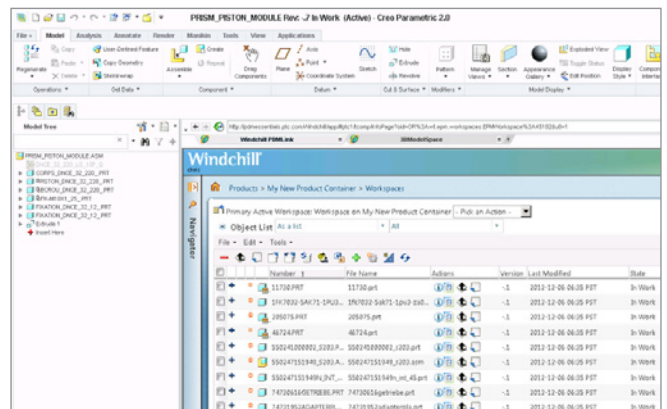
## Key benefits

### Better control

- Securely manage all CAD documents. Only authorized users, both within and outside of the company, can access and/or update a particular design
- Ensure that all changes are properly approved and documented
- Allow only approved changes to be visible to downstream roles such as in purchasing and manufacturing
- Automatically updates relationships between PTC Creo, SolidWorks®, Autodesk Inventor®, and AutoCAD® data objects when changes occur

### Improved engineering productivity

- Web-based architecture accelerates collaboration and distributed product development
- Quickly find and reuse existing designs and IP
- Perform all data management activities directly within PTC Creo



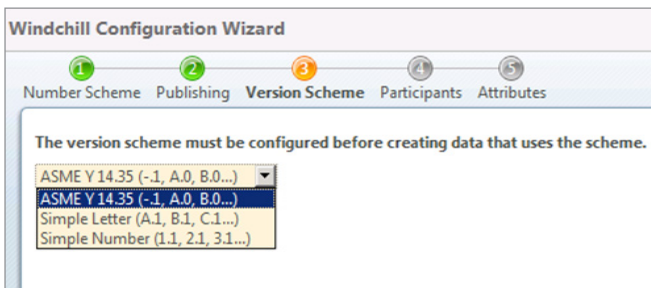
PTC Windchill PDM Essentials is fully integrated with PTC Creo. All data management tasks are accessible from within the PTC Creo user environment, so engineers can spend more time on innovative product design and less time managing data.

## Reduce risk

- Ensure users can quickly find the right item, and the right version of that item
- Minimize the potential for scrap, delays and cost overruns associated with manufacturing using the wrong part or drawing versions
- Allow teams to work without fear of overwriting changes made by others and losing time/data

## Growth potential

- Right-sized for the existing needs of a smaller team and company but also provides the foundation for any potential future requirements
- Easily expand from PTC Windchill PDM Essentials to PTC Windchill in the future. No database upgrade or technical conversion steps means you can quickly take advantage of capabilities such as closed-loop change management, ECAD data management and multi-site database replication



PTC Windchill PDM Essentials configuration wizards walk you through setting up the system.

## Features and specifications

### Comprehensive data management capabilities

- Centralized vaulting and revision control of PTC Creo, AutoCAD, Solidworks, Autodesk Inventor, PTC Pro/ENGINEER Wildfire®, PTC Creo Elements/Direct®, and PTC Mathcad models and structures
- Manage all PTC Creo data files and associations, including family tables, assembly-part relationships, and external simplified representations
- Powerful searching tools, product configuration reports, and easy copying/renaming of existing designs to facilitate design reuse
- Produce both baseline and 'as-stored' configurations
- Produce comprehensive, accurate BOMs and relationship reports
- "Lock" standard parts and assemblies to prevent unwanted changes

### Integrated with MCAD user environment

- All data management commands are accessible from within the PTC Creo embedded browser
- Check-in/Check-out models directly from within Solidworks, AutoCAD or Autodesk Inventor

### Visualization

- Access 'lightweight' graphical images of stored PTC Creo data
- Markup, measure, and section 3D images
- Automatically publish viewables and other formats such as thumbnails for quick viewing, PDF/DXF for drawings and IGES/STL for molds/rapid prototyping

### Lifecycle management

- Simple promotion process for advancing design maturity and granting broader access to product information
- Coordinate all applicable users in a coordinated review and process
- Task notification integrated with corporate email
- Enforce standard naming conventions, versioning schemes and design processes across multiple design projects

### Document management

- Efficiently manage office documents such as Microsoft Word and Excel using the same tools that are utilized with CAD documents, like version control and check in/check out functionality.
- Define the types of documents – such as specifications, requirements, and test results – and specify different sets of attributes per document type
- Controls versions and iterations of all documents
- ‘Secondary content’ can be added to PTC Creo data, providing a direct association for data that does not need to be independently lifecycle managed

### Simplified deployment process

- Everything a customer needs to get up and running including SQL Server Standard edition, is included in one easy-to-install package
- Validates hardware and software configuration
- All software components, including the database, are automatically installed and configured

### System specifications

- PTC Pro/ENGINEER Wildfire 5.0 M070 or higher, PTC Creo 2.0 M030 or higher, PTC Creo Elements/Direct 18.1 or higher
- Microsoft Windows® Server 2008 R2
- Browser: Internet Explorer®, Firefox®, Google Chrome®

For the most up-to-date platform support information, please visit:

[PTC.com/partners/hardware/current/support.htm](http://PTC.com/partners/hardware/current/support.htm)

### To Learn more

Please visit:

[PTC.com/product/windchill/pdm-essentials](http://PTC.com/product/windchill/pdm-essentials)

or contact your local sales representative

© 2013, PTC Inc. (PTC). All rights reserved. Information described herein is furnished for informational use only, is subject to change without notice, and should not be taken as a guarantee, commitment, condition or offer by PTC. PTC, the PTC Logo, PTC Windchill, PTC Creo, PTC Creo Elements/Direct, PTC Mathcad, PTC Pro/ENGINEER Wildfire, and all other PTC product names and logos are trademarks or registered trademarks of PTC and/or its subsidiaries in the United States and other countries. All other product or company names are property of their respective owners. The timing of any product release, including any features or functionality, is subject to change at PTC's discretion.

J1381-PTC Windchill PDM Essentials-DS-EN-0113